



## VŪ EkO

*"The name Eko is primarily a male name of Indonesian origin that means First Child."*

At VŪSaunas, we believe that wellness is about finding balance, connecting with nature and taking care of your mind, body and soul. We're proud to offer high-quality saunas that are designed to help you relax, detoxify, and improve your overall wellness.

We are delighted to present you with the VŪ EkO Model. This model totals 42sf with two tier benches suitable for 2 to 4 people overlooking the nature through the floor to ceiling glass window. This unit includes knotty western red cedar and LP SmartSide board & batten exterior. The sauna heater unit included is made by Harvia.

Production timeline is 4-6 weeks. To place your order, we require a 50% deposit. The balance is due when it is complete and ready to be shipped. Delivery fee to be calculated upon ordering. The ground set-up, electrical connection and applicable permit are the customers' responsibilities. We also offer set-up assistance for a fee based on required machinery and distance. Financing is available.

Your VŪ EkO awaits you,

*Philippe & Sabrina @ VŪSaunas*

---

## 01 GENERAL

---

Design center & Coordination

---

## 02 EXTERIOR FINISHES

---

LP SmartSide Board & Batten

EXTRA Optional – Metal exterior cladding “Distinction” *(Add \$3099)*

---

## 03 ROOF

---

Self-adhered Polyglass modified bitumen 2-ply membrane system

---

## 04 STRUCTURE

---

Wood & Hardware required to build the sauna

---

## 05 INSULATION | MEMBRANES

---

Floor, walls and roof insulated | Self-adhering membranes: floor & roof

Heat Reflective membrane inside the unit

---

## 06 WINDOWS & DOOR

---

10mm Tempered Glass, integrated glass door and accessories.

---

## 07 INTERIOR FINISHES

---

1x6 STK WR Cedar T&G (5/8" x 5" face) – Floor, walls and ceiling

5/4x6 WR Cedar bench surfaces on 2x4 WR Cedar bench frame

EXTRA Optional – Clear Select Western Red Cedar *(Add \$4199)*

---

---

**08 HEATER**

---

HARVIA KIP 60B BLACK (*breaker size as per manufacturer specifications*)

HARVIA SAUNA STONES

HARVIA BLACK SAUNA PRODUCT SET

*Bucket | Ladle | Thermo/hygrometer*

EXTRA Optional – HUUM Drop 4.5 kW c/w UKU Wifi Control "Glass" (Add \$3499)

---

**09 ELECTRICAL & VENTILATION**

---

Electrical wiring, set up heater and components

Interior LED low voltage strip lighting (*VŪSaunas Standards*)

Ventilation of Sauna Unit (*VŪSaunas Standards*)

EXTRA Optional - 3 Exterior low voltage light fixtures (*Add \$399*)

---

**TOTAL PRICE - (*Plus HST*)**

**\$21699**

---

---

Client Name & Signature

Date

---

Client Name & Signature

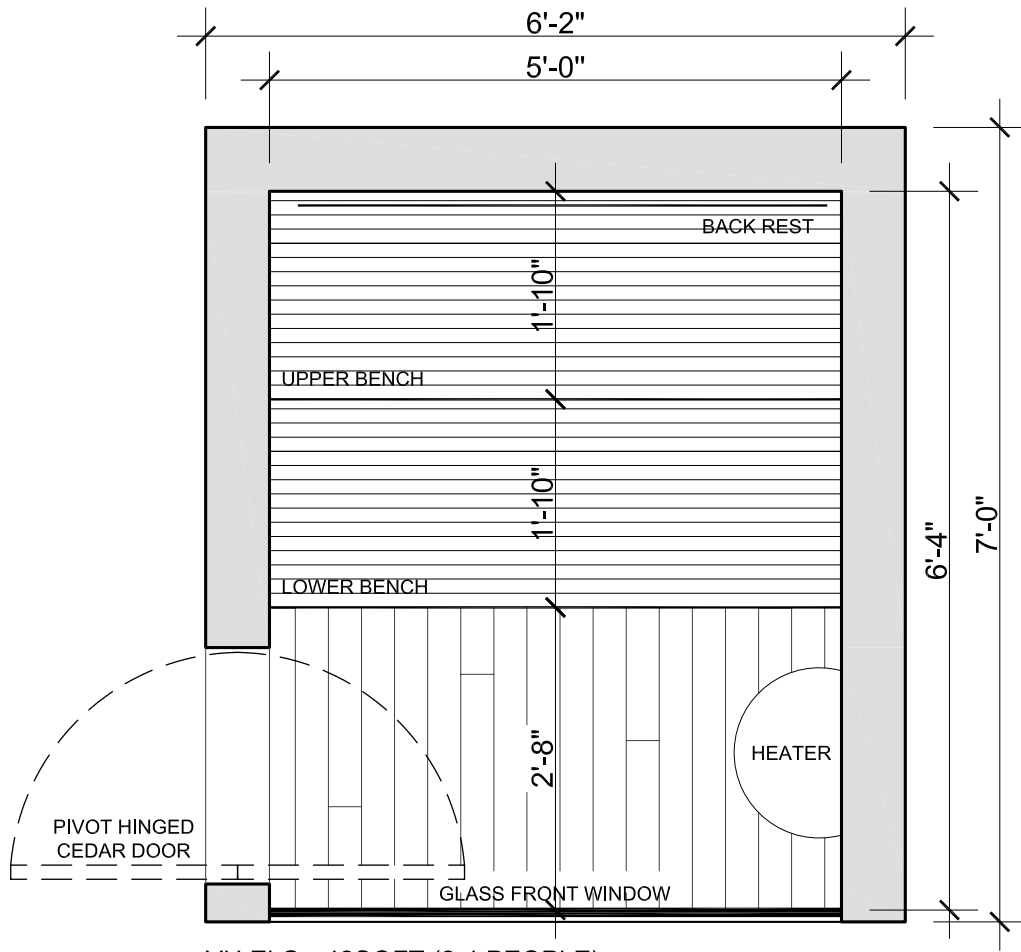
Date

---

VU SAUNAS Representative – Name & Signature

Date

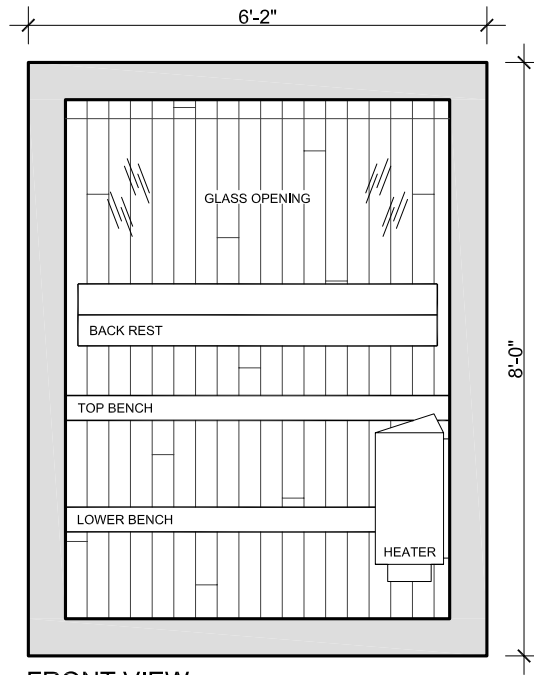
### FLOOR PLAN



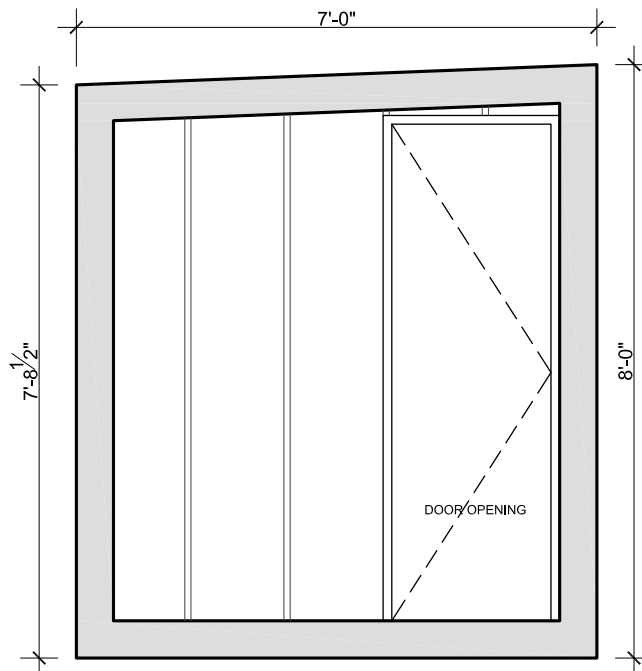
VU Eko - 42SQFT (2-4 PEOPLE)

DIMENSIONS SHOWN ARE SUBJECT TO CHANGE DURING ASSEMBLY.  
USE AS REFERENCE ONLY.

### ELEVATIONS



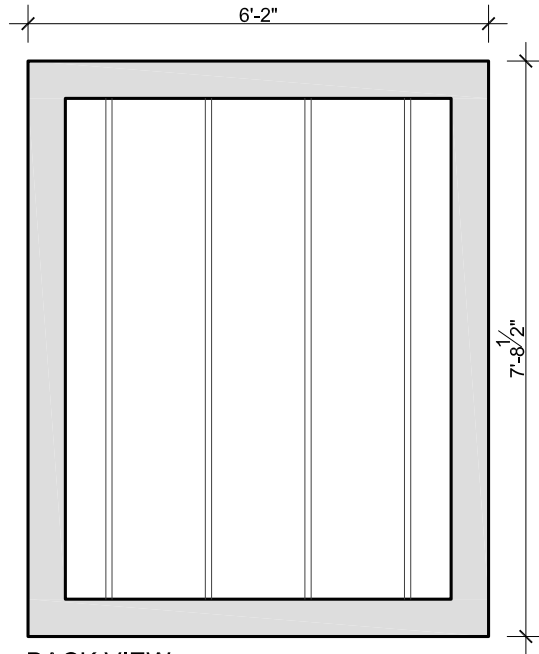
FRONT VIEW



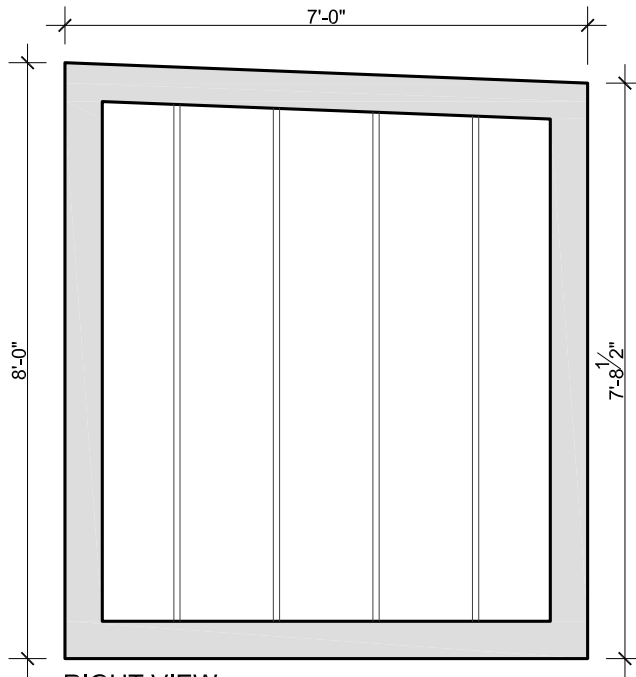
LEFT VIEW

DIMENSIONS SHOWN ARE SUBJECT TO CHANGE DURING ASSEMBLY.  
USE AS REFERENCE ONLY.

### ELEVATIONS



BACK VIEW



RIGHT VIEW

DIMENSIONS SHOWN ARE SUBJECT TO CHANGE DURING ASSEMBLY.  
USE AS REFERENCE ONLY.

**HARVIA KIP 60B BLACK**



**HARVIA BLACK SAUNA PRODUCT SET**



*Additional upgrades available, ask your VŪSaunas representative.*